

LANDSCAPE DESIGN DRAWINGS

FOR
1 - 20 Railway Road
Meadowbank NSW

DRAWING LIST:

Ref	Title	Scale
LP00	Title Sheet	1:1 @ A3
LP01	Landscape Plan: Ground Floor	1:500 @ A3
LP02	Landscape Plan: Level 1 (north)	1:250 @ A3
LP03	Landscape Plan: Level 1 (south)	1:250 @ A3
LP04	Landscape Plan: Level 2 & 3	1:500 @ A3
LP05	Landscape Plan: Level 4 & 5	1:500 @ A3
LP06	Landscape Plan: Level 6	1:500 @ A3
LP07	Landscape Plan: Level 7 (north)	1:200 @ A3
LP08	Landscape Plan: Level 7 (south)	1:200 @ A3
LP09	Schedule	1:1 @ A3
LP10	Paradigm Images	1:1 @ A3
LP11	Levels Plan: Level 1 (north)	1:250 @ A3
LP12	Levels Plan: Level 1 (south)	1:250 @ A3
LP13	Landscape Sections 01	1:100 @ A3
LP14	Landscape Sections 02	AS @ A3

26 March 2025

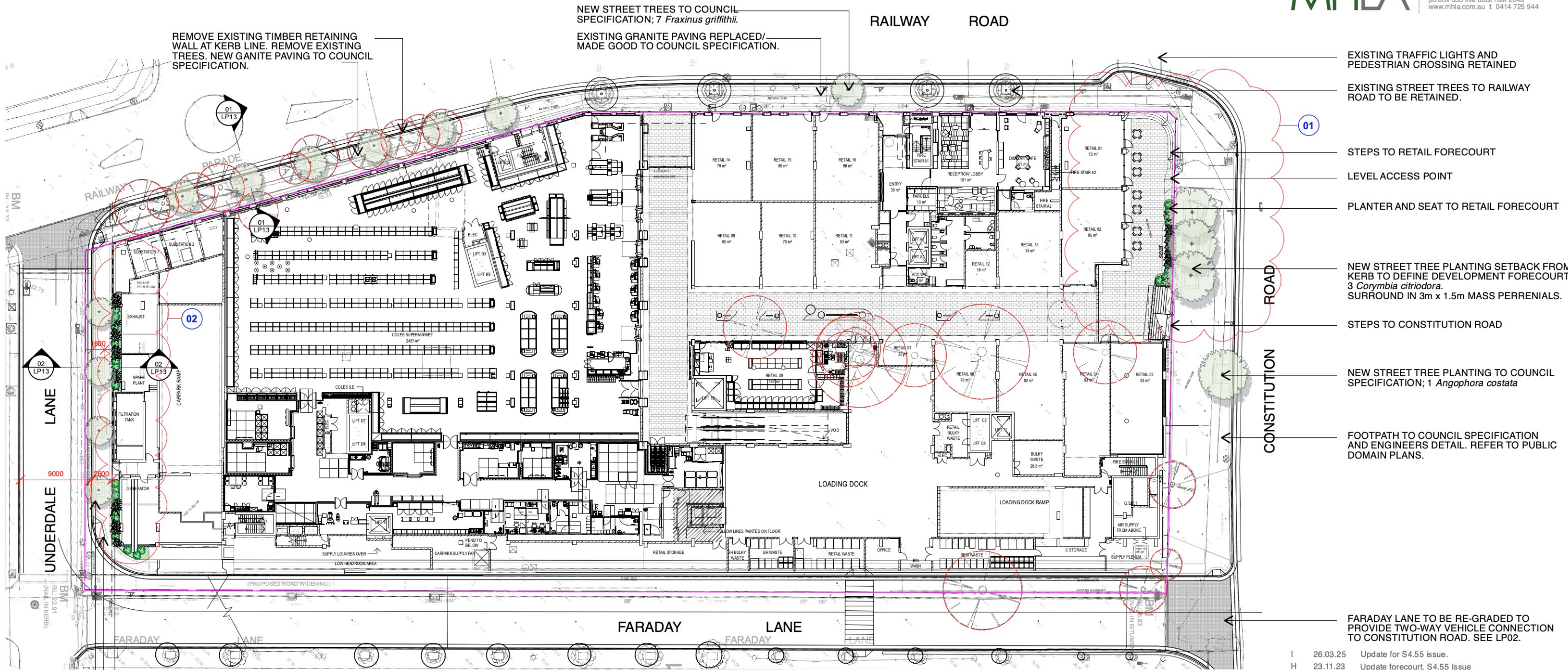
LIST OF DESIGN CHANGES:

- Ground Level (LP01)
01 - Update entry forecourt to suit building levels.
02 - Update planters to Underdale Lane frontage
- Level 1 (LP02; LP03)
03 - Update to suit building amendments to approved MOD2024/0191
04 - Amend COS planters shape and arrangement to meet egress requirements and buildability.
05 - Amend paving design to suit construction method (pedestal)
06 - Remove planters to suit building amendments to approved MOD2024/0191
07 - Amend Faraday Lane frontage to suit building structure.
- Level 2 & 3 (LP04)
08 - Update planters.
09 - Remove narrow planters from private balconies.
- Level 4 & 5 (LP05)
10 - Update Planters.
11 - Remove narrow planters from private balconies.
- Level 6 (LP06)
12 - Update Planters.
13 - Remove narrow planters from private balconies.
- Level 7 (LP07; LP08)
14 - Update to suit building amendments to approved MOD2024/0191
15 - Amend COS planters shape and arrangement to meet egress requirements and buildability.
16 - Amend paving design to suit construction method (pedestal)
- General
17 - Update schedule (add/ remove species)
18 - Update levels plans to reflect changes (LP11 & LP12)
19 - Update sections to reflect changes (LP13 & LP14)

SECTION 4.55 APPLICATION



1 - 20 RAILWAY



LIST OF DESIGN CHANGES:

Ground Level (LP01)
01 - Update entry forecourt to suit building levels to approved MOD2024/0191
02 - Update planters to Underdale Lane frontage

I	26.03.25	Update for S4.55 issue.
H	23.11.23	Update forecourt. S4.55 Issue
G	28.01.22	Update Faraday/ Constitution junction. DA issue
F	02.12.21	Update planters. DA issue
E	26.11.21	Update GF, awnings, balc planters. DA issue
D	02.11.21	Amend to comments. DA issue
C	09.12.20	Update to arch. Amend to comments. DA issue
B	22.05.20	Amend to comments. DA issue
A	21.05.20	Update to Arch. DA issue
issue	date	description

project
**Railway Road
Meadowbank NSW**

client
Apt. Residential Pty Ltd

drawing title
Landscape Plan : Ground Floor

scale	project no.	drawing no.	issue
1:500 @ A3	19836	LP01	I

SECTION 4.55 APPLICATION

notes: This drawing has been prepared for consideration and reference in the communication of conceptual ideas and is not intended as a detailed 'For Construction' document. No guarantee is given to the accuracy in location or size of existing or proposed elements, measurements or nominated or figured dimensions. Do not scale drawing. Drawing and content protected by copyright.

LIST OF DESIGN CHANGES:

- Level 1 (LP02; LP03)
03 - Update to suit building amendments to approved MOD2024/0191
04 - Amend COS planters shape and arrangement to meet egress requirements and buildability.
05 - Amend paving design to suit construction method (pedestal)
07 - Amend Faraday Lane frontage to suit building structure.

NOTES:
1. SOIL VOLUMES FOR ON PODIUM GARDENS TO BE PROVIDED IN ACCORDANCE WITH NSWDPIC APARTMENT DESIGN GUIDE PART 4, TABLE 5.

2. INDICATIVE SOIL VOLUME/ DEPTH SUBJECT TO DETAIL DESIGN AS FOLLOWS:
- SMALL TREES = 9m3 SOIL VOLUME PER TREE
- PALMS = min. 3m3 SOIL VOLUME PER TREE
- SHRUBS = min. 500mm DEPTH
- GROUNDCOVERS = min. 300mm DEPTH
- TURF = min. 200mm DEPTH

REFER TO DRAWING LP12 FOR LEVELS AND SOIL DEPTHS.

SCREEN PLANTING TO SOFTEN ELEVATION AND BACKDROP C.O.S ;
- Syzygium 'Select'

UNDERDALE LANE



PLANTING TO PROVIDE SEPARATION BETWEEN COMMON OPEN SPACE AND PRIVATE BALCONIES.

- Buxus
- Aspidistra
- Philodendron
- Sansevieria

04

- MIXED NATIVE CANOPY;
- Livistona australis (La)
 - Cyathea australis (Ca)
 - Cyathea cooperi (Cc)
 - Elaeocarpus reticulatus (Er)
 - Elaeocarpus eumundii (Ee)

PLANTING TO PROVIDE SEPARATION BETWEEN COMMON OPEN SPACE AND PRIVATE BALCONIES.

- Rhipidolepis
- Aspidistra
- Philodendron
- Sansevieria

I	26.03.25	Update for S4.55 issue.
H	23.11.23	Update to arch. S4.55 issue
G	28.01.22	Update Faraday/ Constitution junction. DA issue
F	02.12.21	Update planters. DA issue
E	26.11.21	Update GF, awnings, balc planters. DA issue
D	02.11.21	Amend to comments. DA issue
C	09.12.20	Update to arch. Amend to comments. DA issue
B	22.05.20	Amend to comments. DA issue
A	21.05.20	Update to Arch. DA issue
issue	date	description

project
**Railway Road
Meadowbank NSW**

client
Apt. Residential Pty Ltd

drawing title
Landscape Plan : Level 1 (south)

scale	project no.	drawing no.	issue
1:250 @ A3	19836	LP03	I

SECTION 4.55 APPLICATION

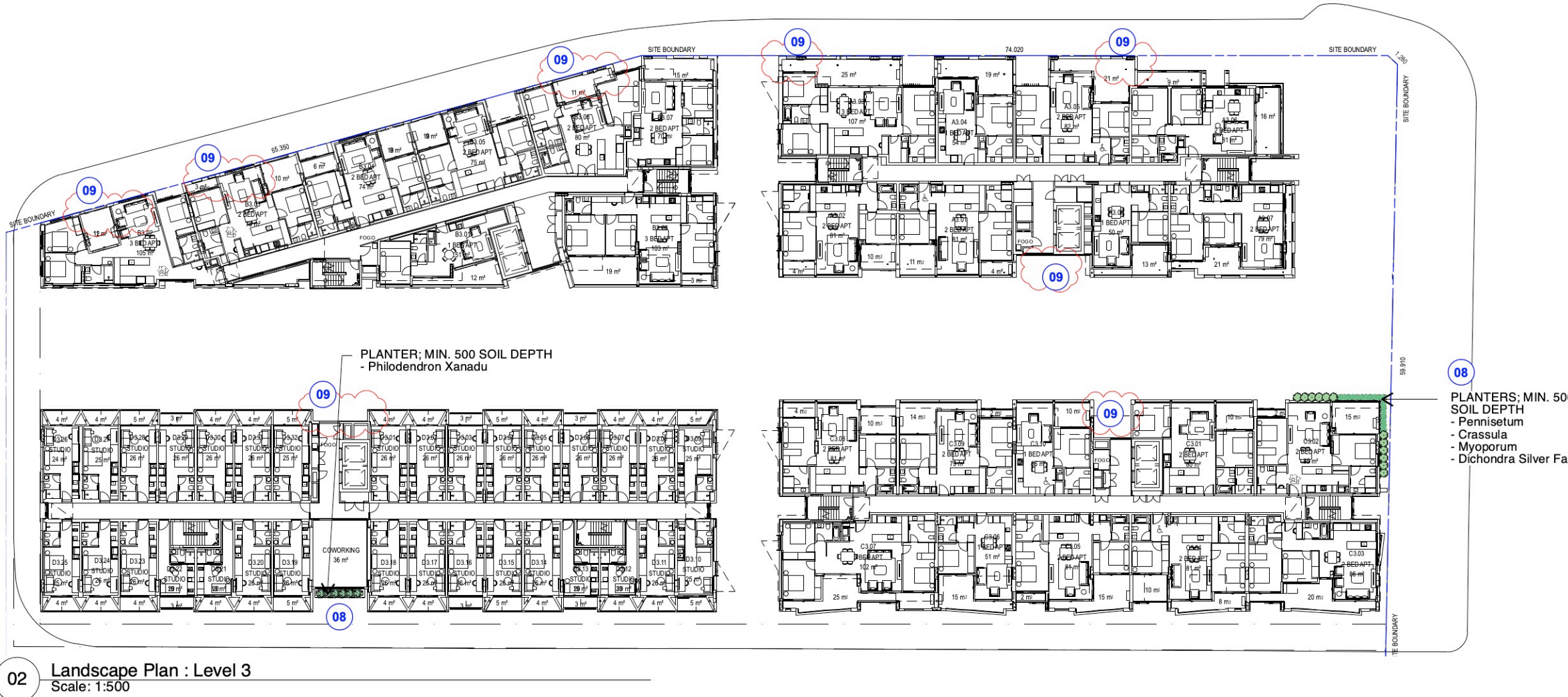
notes: This drawing has been prepared for consideration and reference in the communication of conceptual ideas and is not intended as a detailed 'For Construction' document. No guarantee is given to the accuracy in location or size of existing or proposed elements, measurements or nominated or figured dimensions. Do not scale drawing. Drawing and content protected by copyright.

NOTES:
1. SOIL VOLUMES FOR ON PODIUM GARDENS TO BE PROVIDED IN ACCORDANCE WITH NSWDPPE APARTMENT DESIGN GUIDE PART 4, TABLE 5.
2. INDICATIVE SOIL VOLUME/ DEPTH SUBJECT TO DETAIL DESIGN AS FOLLOWS:
- SHRUBS = min. 500mm DEPTH
- GROUNDCOVERS = min. 300mm DEPTH



LIST OF DESIGN CHANGES:

Level 2 & 3 (LP04)
08 - Update planters.
09 - Remove narrow planters from private balconies.



I	26.03.25	Update for S4.55 issue.
H	23.11.23	Add community facility. S4.55 issue
G	28.01.22	Update Faraday/ Constitution junction. DA issue
F	02.12.21	Update planters. DA issue
E	26.11.21	Update GF, awnings, balc planters. DA issue
D	02.11.21	Amend to comments. DA issue
C	09.12.20	Update to arch. Amend to comments. DA issue
B	22.05.20	Amend to comments. DA issue
A	21.05.20	Update to Arch. DA issue
issue	date	description

project
**Railway Road
Meadowbank NSW**

client
Apt. Residential Pty Ltd

drawing title
Landscape Plan : Level 2 & 3

scale
1:500 @ A3

project no.
19836

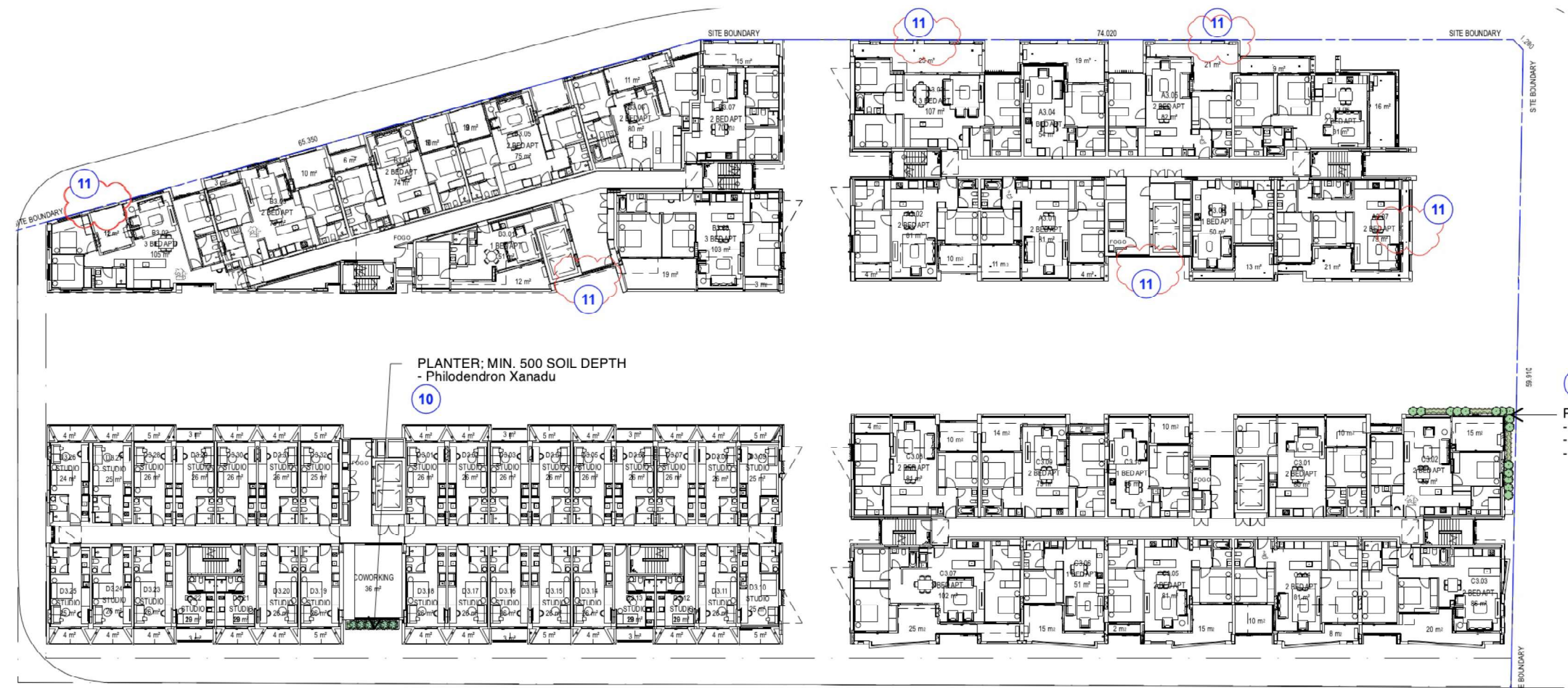
drawing no.
LP04

issue
I

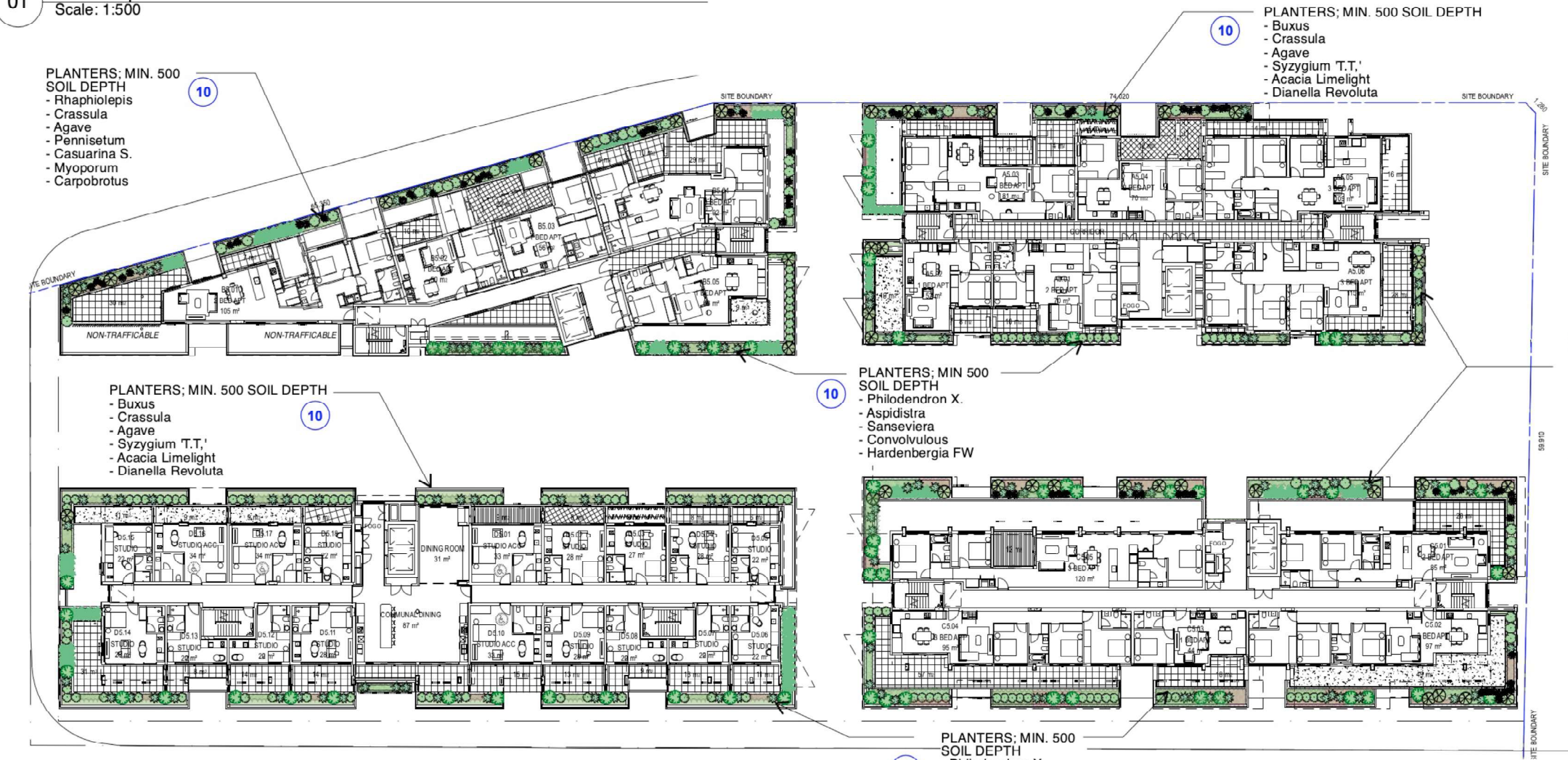
SECTION 4.55 APPLICATION

notes: This drawing has been prepared for consideration and reference in the communication of conceptual ideas and is not intended as a detailed 'For Construction' document. No guarantee is given to the accuracy in location or size of existing or proposed elements, measurements or nominated or figured dimensions. Do not scale drawing. Drawing and content protected by copyright.

NOTES:
1. SOIL VOLUMES FOR ON PODIUM GARDENS TO BE PROVIDED IN ACCORDANCE WITH NSWDPPE APARTMENT DESIGN GUIDE PART 4, TABLE 5.
2. INDICATIVE SOIL VOLUME/ DEPTH SUBJECT TO DETAIL DESIGN AS FOLLOWS:
- SHRUBS = min. 500mm DEPTH
- GROUNDCOVERS = min. 300mm DEPTH



01 Landscape Plan : Level 4
Scale: 1:500



02 Landscape Plan : Level 5
Scale: 1:500

10 PLANTERS; MIN. 500 SOIL DEPTH
- Sansevieria
- Buxus
- Convolvulus

10 PLANTERS; MIN. 500 SOIL DEPTH
- Buxus
- Crassula
- Agave
- Syzygium 'T.T.'
- Acacia Limelight
- Dianella Revoluta

10 PLANTERS; MIN 500 SOIL DEPTH
- Rhaphiolepis
- Crassula
- Agave
- Pennisetum
- Casuarina S.
- Myoporum
- Carpobrotus

10 PLANTERS; MIN 500 SOIL DEPTH
- Philodendron X.
- Aspidistra
- Sansevieria
- Convolvulus
- Hardenbergia FW

10 PLANTERS; MIN. 500 SOIL DEPTH
- Philodendron X.
- Aspidistra
- Sansevieria
- Convolvulus
- Hardenbergia FW

LIST OF DESIGN CHANGES:

Level 4 & 5 (LP05)
10 - Update Planters.
11 - Remove narrow planters from private balconies.

issue	date	description
I	26.03.25	Update for S4.55 issue.
H	23.11.23	Add community facility. S4.55 issue
G	28.01.22	Update Faraday/ Constitution junction. DA issue
F	02.12.21	Update planters. DA issue
E	26.11.21	Update GF, awnings, balc planters. DA issue
D	02.11.21	Amend to comments. DA issue
C	09.12.20	Update to arch. Amend to comments. DA issue
B	22.05.20	Amend to comments. DA issue
A	21.05.20	Update to Arch. DA issue

project
**Railway Road
Meadowbank NSW**

client
Apt. Residential Pty Ltd

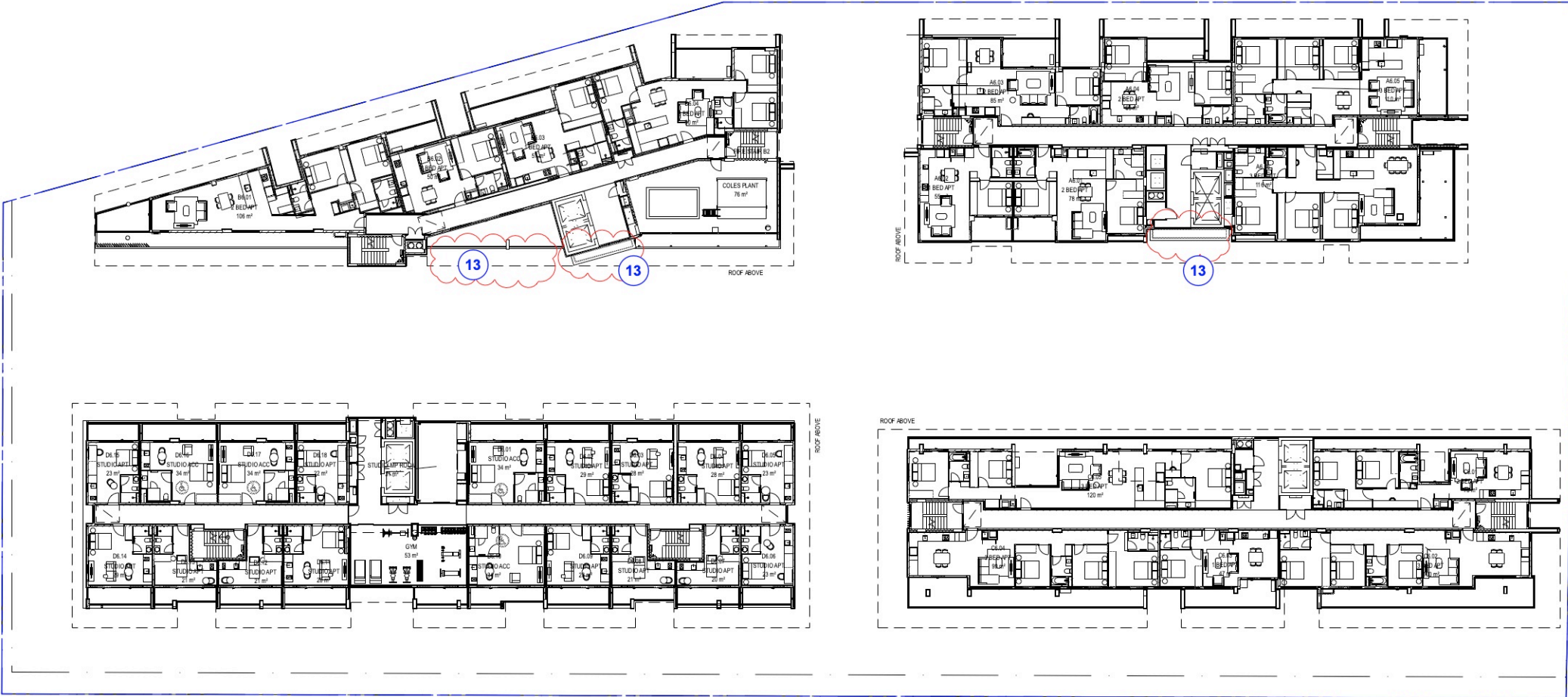
drawing title
Landscape Plan : Level 4 & 5

scale	project no.	drawing no.	issue
1:500 @ A3	19836	LP05	I

SECTION 4.55 APPLICATION

notes: This drawing has been prepared for consideration and reference in the communication of conceptual ideas and is not intended as a detailed 'For Construction' document. No guarantee is given to the accuracy in location or size of existing or proposed elements, measurements or nominated or figured dimensions. Do not scale drawing. Drawing and content protected by copyright.

NOTES:
1. SOIL VOLUMES FOR ON PODIUM GARDENS TO BE PROVIDED IN ACCORDANCE WITH NSWDPPE APARTMENT DESIGN GUIDE PART 4, TABLE 5.
2. INDICATIVE SOIL VOLUME/ DEPTH SUBJECT TO DETAIL DESIGN AS FOLLOWS:
- SHRUBS = min. 500mm DEPTH
- GROUNDCOVERS = min. 300mm DEPTH



01

Landscape Plan : Level 6
Scale: 1:500

LIST OF DESIGN CHANGES:

- Level 6 (LP06)
12 - Update Planters.
13 - Remove narrow planters from private balconies.

I	26.03.25	Update for S4.55 issue.
H	23.11.23	Add community facility. S4.55 issue
G	28.01.22	Update Faraday/ Constitution junction. DA issue
F	02.12.21	Update planters. DA issue
E	26.11.21	Update GF, awnings, balc planters. DA issue
D	02.11.21	Amend to comments. DA issue
C	09.12.20	Update to arch. Amend to comments. DA issue
B	22.05.20	Amend to comments. DA issue
A	21.05.20	Update to Arch. DA issue
issue	date	description

project
**Railway Road
Meadowbank NSW**



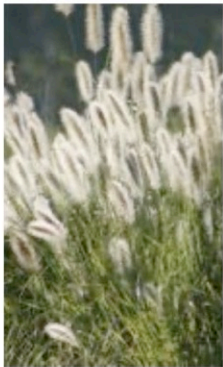
client
Apt. Residential Pty Ltd

drawing title
Landscape Plan : Level 6

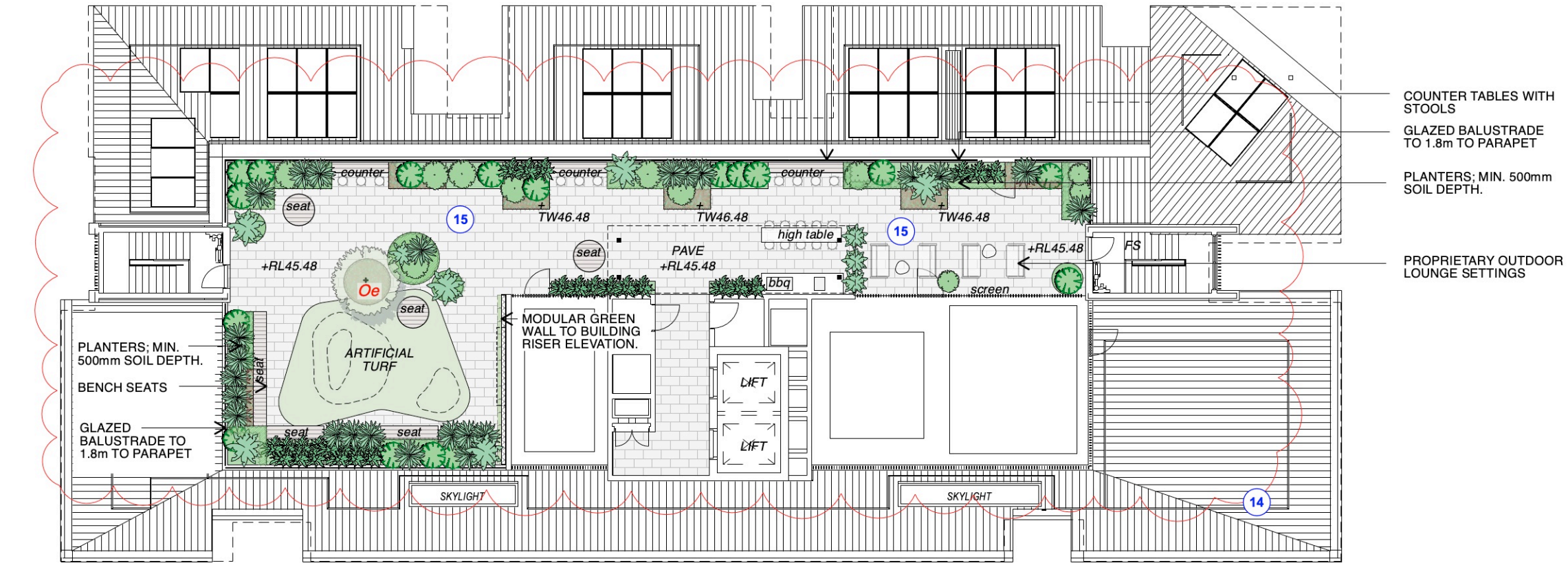
scale	project no.	drawing no.	issue
1:500 @ A3	19836	LP06	I

SECTION 4.55 APPLICATION

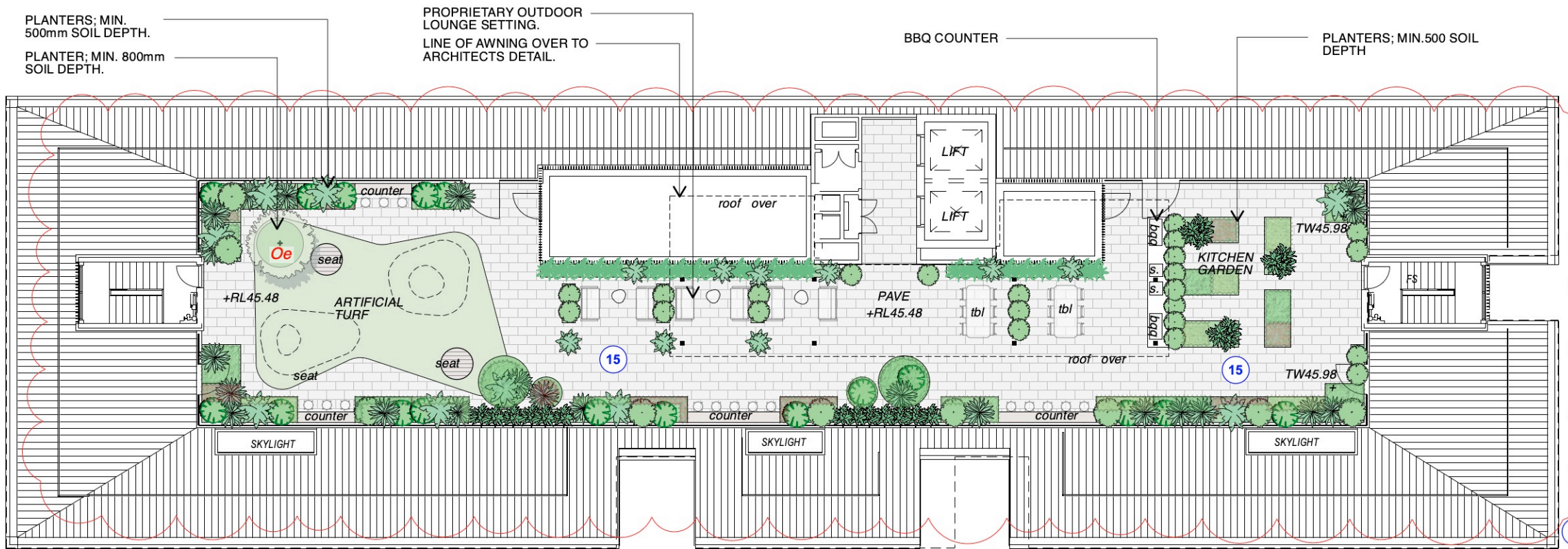
notes: This drawing has been prepared for consideration and reference in the communication of conceptual ideas and is not intended as a detailed 'For Construction' document . No guarantee is given to the accuracy in location or size of existing or proposed elements, measurements or nominated or figured dimensions. Do not scale drawing. Drawing and content protected by copyright.



NOTES:
1. SOIL VOLUMES FOR ON PODIUM GARDENS TO BE PROVIDED IN ACCORDANCE WITH NSWDPIC APARTMENT DESIGN GUIDE PART 4, TABLE 5.
2. INDICATIVE SOIL VOLUME/ DEPTH SUBJECT TO DETAIL DESIGN AS FOLLOWS:
- SMALL TREES = 9m3 SOIL VOLUME PER TREE
- SHRUBS = min. 500mm DEPTH
- GROUNDCOVERS = min. 300mm DEPTH
- TURF = min. 200mm DEPTH



01 Building A Roof Terrace
Scale: 1:200

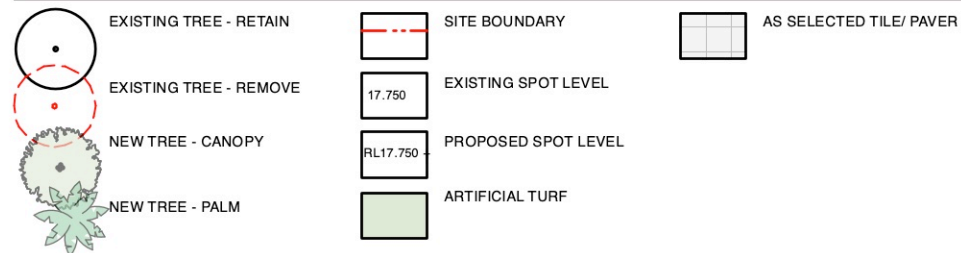


02 Building C Roof Terrace
Scale: 1:200

LIST OF DESIGN CHANGES:

Level 7 (LP07; LP08)
14 - Update to suit building amendments.
15 - Amend paving design to suit construction method (pedestal)

LEGEND:



I	26.03.25	Update for S4.55 issue.
H	23.11.23	Add community facility. S4.55 issue
G	28.01.22	Update Faraday/ Constitution junction. DA issue
F	02.12.21	Update planters. DA issue
E	26.11.21	Update GF, awnings, balc planters. DA issue
D	02.11.21	Amend to comments. DA issue
C	09.12.20	Update to arch. Amend to comments. DA issue
B	22.05.20	Amend to comments. DA issue
A	21.05.20	Update to Arch. DA issue
issue	date	description

project
**Railway Road
Meadowbank NSW**

client
Apt. Residential Pty Ltd

drawing title
Landscape Plan : Level 7 (north)

scale
1:200 @ A3

project no.
19836

drawing no.
LP07

issue
I

SECTION 4.55 APPLICATION

notes: This drawing has been prepared for consideration and reference in the communication of conceptual ideas and is not intended as a detailed 'For Construction' document. No guarantee is given to the accuracy in location or size of existing or proposed elements, measurements or nominated or figured dimensions. Do not scale drawing. Drawing and content protected by copyright.

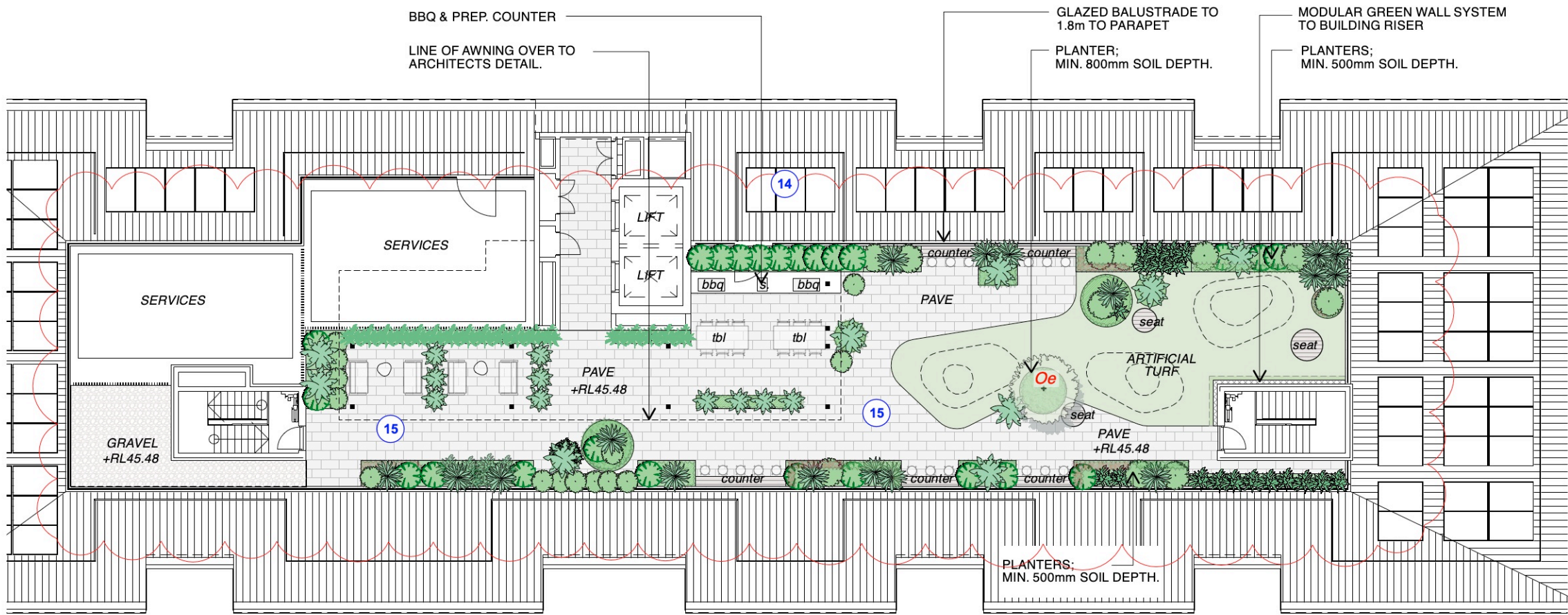


01 Building B Roof Terrace
Scale: 1:200

- GLAZED BALUSTRADE TO 1.8m TO PARAPET
- PLANTERS; MIN. 500mm SOIL DEPTH.
- SCREEN TO SERVICES AREA
- PROPRIETARY OUTDOOR LOUNGE SETTING
- AWNING OVER TO ARCHITECTS DETAIL.
- SCREEN TO SERVICES AREA
- PLANTERS; MIN. 500mm SOIL DEPTH.

NOTES:
1. SOIL VOLUMES FOR ON PODIUM GARDENS TO BE PROVIDED IN ACCORDANCE WITH NSWDPIC APARTMENT DESIGN GUIDE PART 4, TABLE 5.

2. INDICATIVE SOIL VOLUME/ DEPTH SUBJECT TO DETAIL DESIGN AS FOLLOWS:
- SMALL TREES = 9m3 SOIL VOLUME PER TREE
- SHRUBS = min. 500mm DEPTH
- GROUNDCOVERS = min. 300mm DEPTH
- TURF = min. 200mm DEPTH



02 Building D Roof Terrace
Scale: 1:200

I	26.03.25	Update for S4.55 issue.
H	23.11.23	Add community facility. S4.55 issue
G	28.01.22	Update Faraday/ Constitution junction. DA issue
F	02.12.21	Update planters. DA issue
E	26.11.21	Update GF, awnings, balc planters. DA issue
D	02.11.21	Amend to comments. DA issue
C	09.12.20	Update to arch. Amend to comments. DA issue
B	22.05.20	Amend to comments. DA issue
A	21.05.20	Update to Arch. DA issue
issue	date	description

project
**Railway Road
Meadowbank NSW**

client
Apt. Residential Pty Ltd

drawing title
Landscape Plan : Level 7 (south)

scale	project no.	drawing no.	issue
1:200 @ A3	19836	LP08	I

SECTION 4.55 APPLICATION

notes: This drawing has been prepared for consideration and reference in the communication of conceptual ideas and is not intended as a detailed 'For Construction' document. No guarantee is given to the accuracy in location or size of existing or proposed elements, measurements or nominated or figured dimensions. Do not scale drawing. Drawing and content protected by copyright.

LIST OF DESIGN CHANGES:

Level 7 (LP07; LP08)
14 - Update to suit building amendments.
15 - Amend paving design to suit construction method (pedestal)

LEGEND:					
	EXISTING TREE - RETAIN		SITE BOUNDARY		AS SELECTED TILE/ PAVER
	EXISTING TREE - REMOVE		EXISTING SPOT LEVEL		
	NEW TREE - CANOPY		PROPOSED SPOT LEVEL		
	NEW TREE - PALM		ARTIFICIAL TURF		

INDICATIVE PLANT SCHEDULE: GROUND

Botanic Name	Common Name	Supply Size (mm/L)	Mature Height	Mature Spread	Location:
Trees					
Angophora costata	Sydney Red Gum	150L	25m	10m	Constitution Road
Corymbia citriodora	Lemon-Scented Gum	150L	20m	8m	Constitution Road
Fraxinus griffithii	Evergreen Ash	150L	7m	4m	Railway Road
Magnolia 'Little Gem'	Little Gem Magnolia	150L	7m	4m	Underdale Lane
Tristaniopsis 'Luscious'	Luscious Water Gum	150L	7m	3m	Faraday Lane
Public Domain					
Grevillea sericea	Pink Spider Flower	200mm	1m	1m	
Hardenbergia Flat White	Flat White Sarsparilla	200mm	0.2m	1m	
Myoporum parvifolium	Creeping Boobialla	200mm	0.1m	1m	
Pennisetum Nafray	Nafray Foxtail Grass	200mm	0.9m	0.9m	
Entry Forecourt					
Philodendron Xanadu	Xanadu Philodendron	200mm	1m	1m	
Pittosporum Miss Muffet	Miss Muffet	300mm	1m	1m	
Strelitzia reginae	Bird of Paradise	300mm	1.5m	1.5m	

INDICATIVE PLANT SCHEDULE: LEVEL 1

Botanic Name	Common Name	Supply Size (mm/L)	Mature Height	Mature Spread	Location:
Trees					
Acer 'Senkaki'	Coral Bark Maple	100L	3m	2m	Street entry accents
Elaeocarpus eumundii	Quondong	100L	8m	3m	
Syzygium 'Northern Select'	Northern Select Lily Pily	75L	7m	4m	
Palms / Ferns/ Cycads					
Alocassia macrorrhiza	Giant Taro	300mm	1.5m	1.5m	
Archontophoenix alexandrae	Alexander Palm	3m stem	15m	3m	COS plaza
Cyathea cooperii	Coin Spot Tree Fern	2m stem	8m	3m	COS plaza
Livistona australis	Aust. Cabbage Tree	3m stem	20m	4m	COS plaza
Rhapis excelsa	Broadleaf Lady Palm	400mm	3m	2m	COS plaza
Shrubs					
Alpinia nutens	False Cardemom	200mm	1m	1m	
Alpinia zerumbet 'Variagata'	Variagated Shell Ginger	200mm	3m	1m	
Buxus sempervirens	Boxwood	200mm	1m	1m	
Calathea zebrina	Zebra Plant	200mm	1m	1m	
Cordylina fruticosa 'Rubra'	Red Ti Plant	200mm	2m	1m	Accent
Doryanthes excelsa	Gymea Lily	45L	1.2m	1.2m	Accent
Philodendron 'Xanadu'	Xanadu Philodendron	200mm	1m	1m	
Rhaphiolepis 'Snow Maiden'	Snow Maiden Hawthorn	200mm	0.8m	0.8m	
Syzygium 'Aussie Boomer'	Aussie Boomer Lily Pily	45L	1.5m	1.5m	
Groundcovers / Climbers / Aquatics					
Asplenium nidum	Birds Nest Fern	200mm	1m	1m	
Aspidistra elatior	Cast Iron Plant	200mm	1m	1m	
Brachyscome multifida	Break-O-Day	200mm	0.2m	0.5m	
Cissus antarctica	Water Vine	200mm	-	2	
Crinum pedunculatum	Swamp Lily	140mm	1	1	
Dianella caerulea	Flax Lily	140mm	0.7m	0.7m	
Hardenbergia violacea	Native Sarsparilla	140mm	-	1m	
Hibbertia scandens	Snake Vine	140mm	-	1m	
Liriope muscarii	Lily Turf	140mm	0.4m	0.4m	
Lomandra 'Tanika'	Tanika Mat Rush	140mm	0.9m	0.9m	
Sansevieria trifasciata	Mother-In-Laws Tongue	200mm	1m	0.4m	
Trachelospermum 'Tricolor'	Tricolor Jasmine	140mm	0.3m	1m	

INDICATIVE PLANT SCHEDULE: LEVEL 2 - 6

Botanic Name	Common Name	Supply Size (mm/L)	Mature Height	Mature Spread	Location:
Shrubs					
Alpinia nutens	False Cardemom	200mm	1m	1m	
Buxus sempervirens	Boxwood	200mm	1m	1m	
Grevillea buxifolia	Grey Spider Flower	200mm	1.5m	1m	L5 Balconies
Philodendron 'Xanadu'	Xanadu Philodendron	200mm	1m	1m	
Rhaphiolepis 'Snow Maiden'	Snow Maiden Hawthorn	200mm	0.8m	0.8m	L5 Balconies
Syzygium 'Aussie Boomer'	Aussie Boomer Lily Pily	45L	1.5m	1.5m	L5 Balconies
Westringia fruticosa 'Zena'	Zena Coast Rosemary	200mm	1m	1m	L5 Balconies
Groundcovers / Climbers / Aquatics					
Aspidistra elatior	Cast Iron Plant	200mm	1m	1m	
Brachyscome multifida	Break-O-Day	200mm	0.2m	0.5m	
Carpobrotus glaucescens	Pigface	200mm	-	2	Cascading
Casuarina Shagpile	Prostrate She-Oak	200mm	-	2	Cascading
Cissus antarctica	Water Vine	200mm	-	2	Cascading
Dichondra 'Silver Falls'	Silver Falls Kidney Weed	140mm	-	1m	Cascading
Hardenbergia violacea	Native Sarsparilla	140mm	-	1m	
Hibbertia scandens	Snake Vine	140mm	-	1m	
Juniperus conferta	Shore Juniper	200mm	0.2m	1m	
Lomandra 'Lime Tuff'	Lime Tuff Mat Rush	140mm	0.5m	0.5m	
Myoporum parvifolium	Creeping Boobialla	140mm	0.3m	1m	Cascading
Pennisetum 'Nafray'	Nafray Foxtail Grass	140mm	0.7m	0.7m	
Sansevieria trifasciata	Mother-In-Laws Tongue	200mm	1m	0.4m	
Sedum 'Blue Spruce'	Blue Spruce	140mm	0.3m	1m	
Trachelospermum 'Tricolor'	Tricolor Jasmine	140mm	0.3m	1m	

INDICATIVE PLANT SCHEDULE: ROOF GARDENS

Botanic Name	Common Name	Supply Size (mm/L)	Mature Height	Mature Spread	Location:
Trees					
Olea europea var europea	European Olive	75L	3m	2m	
Draceana draco	Dragon Blood Tree	2m stem	2m	2m	
Palms / Ferns/ Cycads					
Alocasia macrorrhiza	Giant Taro	300mm	1.5m	1.5m	Accent
Rhapis excelsa	Broadleaf Lady Palm	300mm	2m	1m	
Shrubs					
Buxus sempervirens	Boxwood	300mm	1m	1m	
Crassula ovata	Jade Plant	300mm	1m	1m	
Doryanthes excelsa	Gymea Lily	300mm	1.2m	1.2m	Accent
Gaura lindheimeri	Butterfly Bush	200mm	1m	1m	
Philodendron 'Xanadu'	Xanadu Philodendron	200mm	1m	1m	
Rhaphiolepis 'Apple Blossom'	Snow Maiden Hawthorn	200mm	0.8m	0.8m	
Syzygium 'Aussie Boomer'	Aussie Boomer Lily Pily	200mm	1.5m	1.5m	
Westringia fruticosa 'Zena'	Zena Coast Rosemary	200mm	1m	1m	
Groundcovers / Climbers / Aquatics					
Brachyscome multifida	Break-O-Day	200mm	0.2m	0.5m	
Cissus antarctica	Water Vine	200mm	-	2	
Dianella caerulea	Flax Lily	140mm	0.7m	0.7m	
Hardenbergia violacea	Native Sarsparilla	140mm	-	1m	
Lomandra 'Lime Tuff'	Lime Tuff Mat Rush	140mm	0.5m	0.5m	
Pennisetum 'Nafray'	Nafray Foxtail Grass	140mm	0.7m	0.7m	
Sansevieria trifasciata	Mother-In-Laws Tongue	200mm	1m	0.4m	
Trachelospermum 'Tricolor'	Tricolor Jasmine	140mm	0.3m	1m	

LIST OF DESIGN CHANGES:

General
17 - Update schedule (add/ remove species)

I	26.03.25	Update for S4.55 issue.
H	23.11.23	Add community facility. S4.55 issue
G	28.01.22	Update Faraday/ Constitution junction. DA issue
F	02.12.21	Update planters. DA issue
E	26.11.21	Update GF, awnings, balc planters. DA issue
D	02.11.21	Amend to comments. DA issue
C	09.12.20	Update to arch. Amend to comments. DA issue
B	22.05.20	Amend to comments. DA issue
A	21.05.20	Update to Arch. DA issue
issue	date	description

project
**Railway Road
Meadowbank NSW**



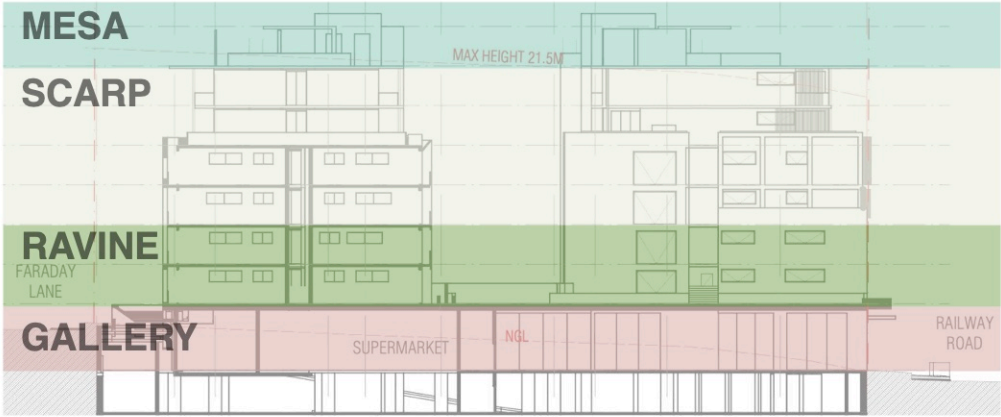
client
Apt. Residential Pty Ltd

drawing title
Schedule

scale	project no.	drawing no.	issue
1:1 @ A3	19836	LP08	I

SECTION 4.55 APPLICATION

notes: This drawing has been prepared for consideration and reference in the communication of conceptual ideas and is not intended as a detailed 'For Construction' document . No guarantee is given to the accuracy in location or size of existing or proposed elements, measurements or nominated or figured dimensions. Do not scale drawing. Drawing and content protected by copyright.



I	26.03.25	Update for S4.55 issue.
H	23.11.23	Add community facility. S4.55 issue
G	28.01.22	Update Faraday/ Constitution junction. DA issue
F	02.12.21	Update planters. DA issue
E	26.11.21	Update GF, awnings, balc planters. DA issue
D	02.11.21	Amend to comments. DA issue
C	09.12.20	Update to arch. Amend to comments. DA issue
B	22.05.20	Amend to comments. DA issue
A	21.05.20	Update to Arch. DA issue
issue	date	description

project
**Railway Road
Meadowbank NSW**

client
Apt. Residential Pty Ltd

drawing title
Paradigm Imagery

scale	project no.	drawing no.	issue
1:1 @ A3	19836	LP10	I

SECTION 4.55 APPLICATION

notes: This drawing has been prepared for consideration and reference in the communication of conceptual ideas and is not intended as a detailed 'For Construction' document. No guarantee is given to the accuracy in location or size of existing or proposed elements, measurements or nominated or figured dimensions. Do not scale drawing. Drawing and content protected by copyright.



NOTES:
1. SOIL VOLUMES FOR ON PODIUM GARDENS TO BE PROVIDED IN ACCORDANCE WITH NSWDPPE APARTMENT DESIGN GUIDE PART 4, TABLE 5.

2. INDICATIVE SOIL VOLUME/ DEPTH SUBJECT TO DETAIL DESIGN AS FOLLOWS:
- SMALL TREES = 9m³ SOIL VOLUME PER TREE
- PALMS = min. 3m³ SOIL VOLUME PER TREE
- SHRUBS = min. 500mm DEPTH
- GROUNDCOVERS = min. 300mm DEPTH
- TURF = min. 200mm DEPTH

3. TOTAL SITE AREA = 7,772m²

KEY:

800mm -1000mm DEEP SOIL AREA.
Total area : 544m²
7% of Site Area
(DA Approved : 544m² / 7% site area)

LIST OF DESIGN CHANGES:

General
18 - Update levels plans to reflect changes (LP11 & LP12)

issue	date	description
E	26.03.25	Update for S4.55 Issue
D	20.11.23	Update to arch. S4.55 Issue
C	12.01.22	Update Faraday Lne planters. DA Issue
B	02.12.21	Update planters. DA Issue
A	02.11.21	Amend to comments. DA Issue
01	01.11.21	Preliminary issue for review.

project

**Railway Road
Meadowbank NSW**

client

Apt. Residential Pty Ltd

drawing title

Levels Plan : Level 1 (north)scale
1:250 @ A3project no.
19836drawing no.
LP11issue
E**SECTION 4.55 APPLICATION**

notes: This drawing has been prepared for consideration and reference in the communication of conceptual ideas and is not intended as a detailed 'For Construction' document. No guarantee is given to the accuracy in location or size of existing or proposed elements, measurements or nominated or figured dimensions. Do not scale drawing. Drawing and content protected by copyright.



- NOTES:
1. SOIL VOLUMES FOR ON PODIUM GARDENS TO BE PROVIDED IN ACCORDANCE WITH NSWDPIC APARTMENT DESIGN GUIDE PART 4, TABLE 5.
 2. INDICATIVE SOIL VOLUME/ DEPTH SUBJECT TO DETAIL DESIGN AS FOLLOWS:
 - SMALL TREES = 9m3 SOIL VOLUME PER TREE
 - PALMS = min. 3m3 SOIL VOLUME PER TREE
 - SHRUBS = min. 500mm DEPTH
 - GROUNDCOVERS = min. 300mm DEPTH
 - TURF = min. 200mm DEPTH

KEY:

800mm -1000mm DEEP SOIL AREA.
Total area : 544m2
7% of Site Area
(DA Approved : 544m2 / 7% site area)

LIST OF DESIGN CHANGES:

General
18 - Update levels plans to reflect changes (LP11 & LP12)

D	26.03.25	Update for S4.55 Issue
C	20.11.23	Update to arch. S4.55 Issue
B	12.01.22	Update Faraday Lne planters. DA Issue
A	02.11.21	Amend to comments. DA issue
01	01.11.21	Preliminary issue for review.
issue	date	description

project
**Railway Road
Meadowbank NSW**

client
Apt. Residential Pty Ltd

drawing title
Levels Plan : Level 1 (south)

scale
1:250 @ A3

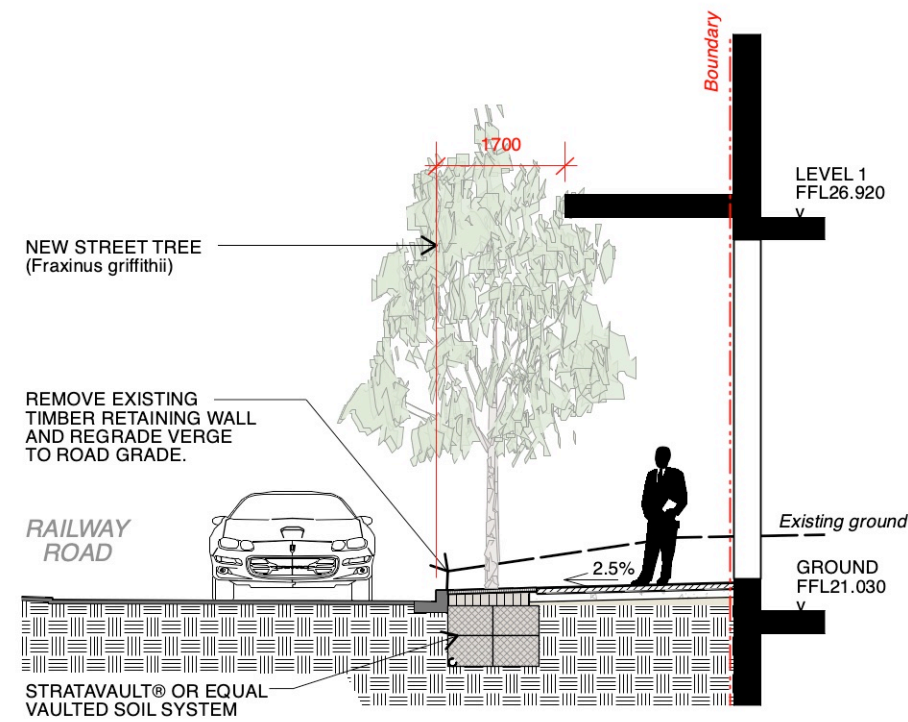
project no.
19836

drawing no.
LP12

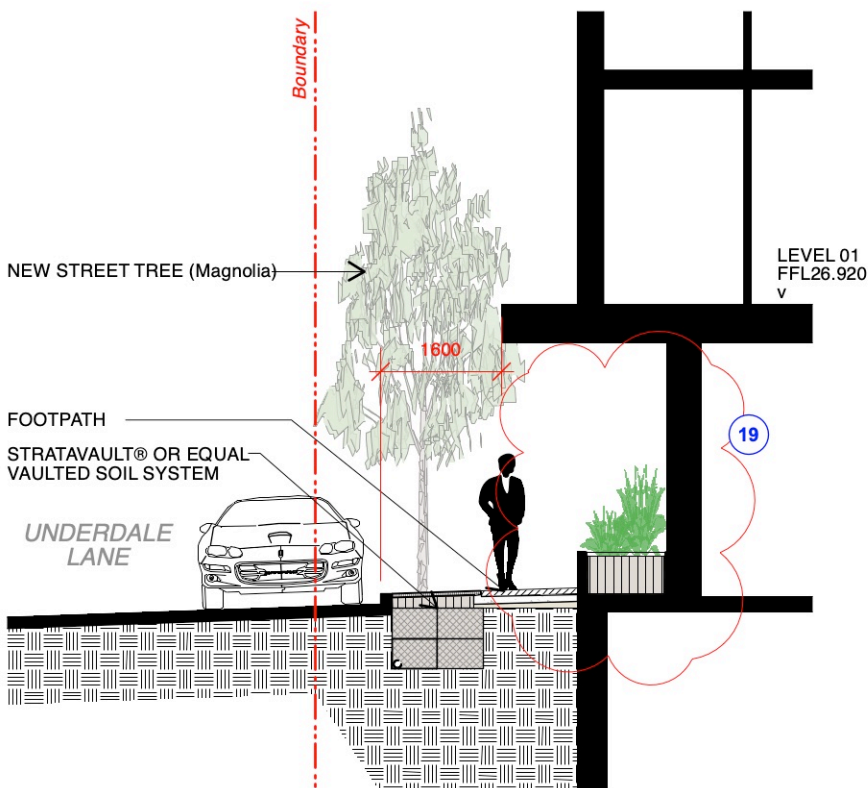
issue
D

SECTION 4.55 APPLICATION

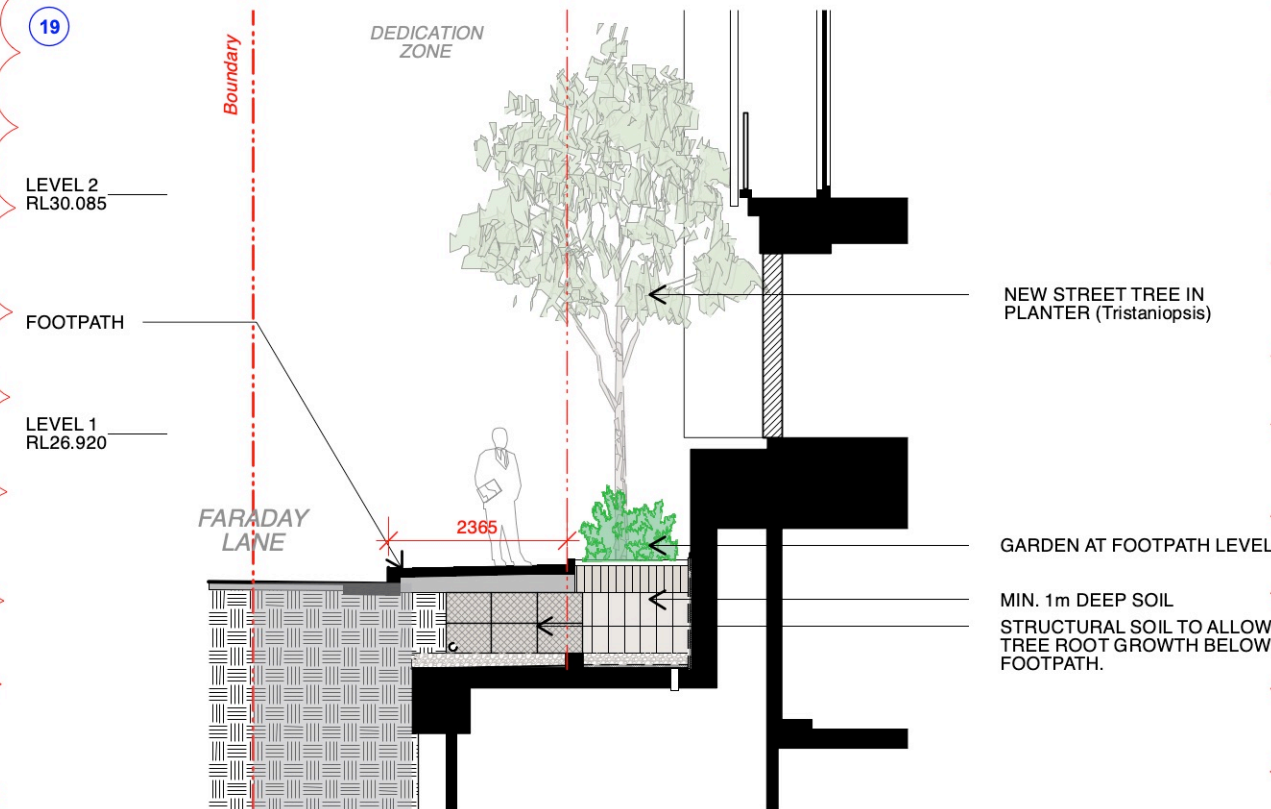
notes: This drawing has been prepared for consideration and reference in the communication of conceptual ideas and is not intended as a detailed 'For Construction' document. No guarantee is given to the accuracy in location or size of existing or proposed elements, measurements or nominated or figured dimensions. Do not scale drawing. Drawing and content protected by copyright.



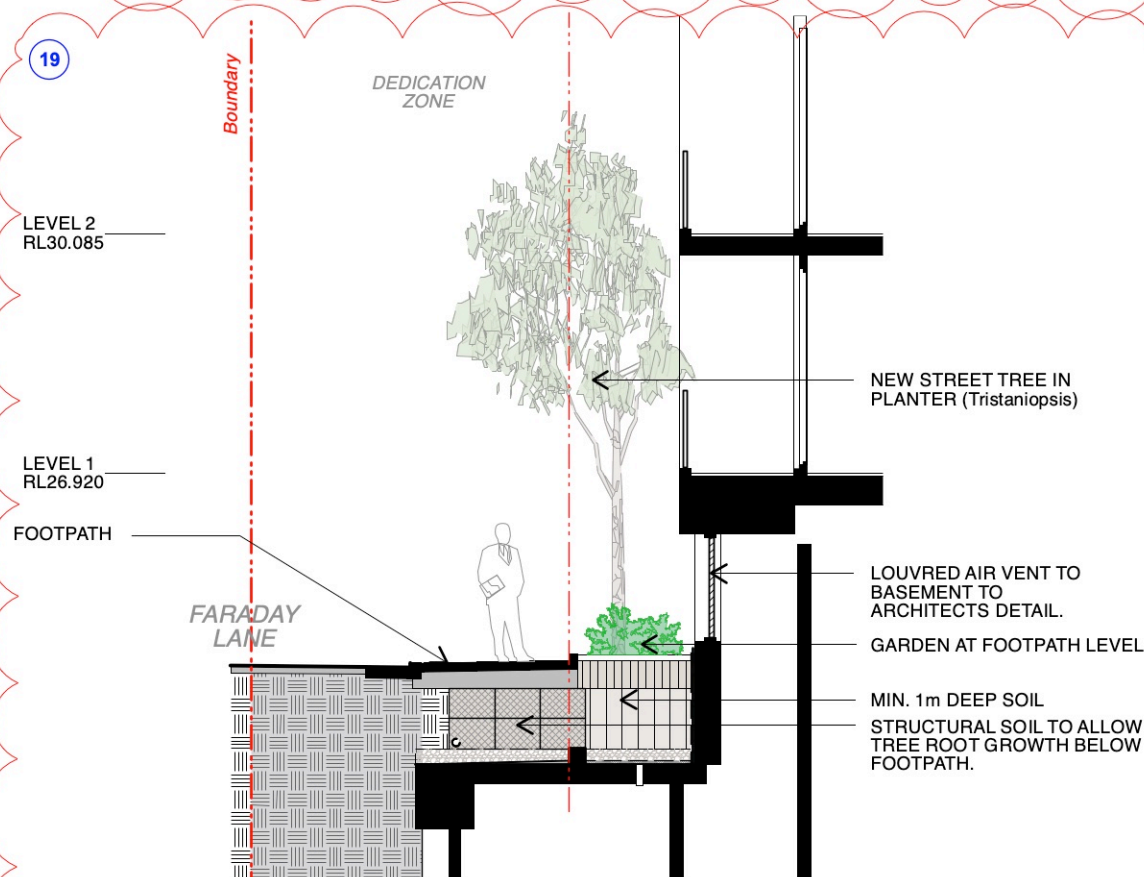
01 Section A : Railway Rd (south)
Scale: 1:100



02 Section B : Underdale Lane
Scale: 1:100



03 Section C : Faraday Lane @ Building C
Scale: 1:100



04 Section D : Faraday Lane @ Building D
Scale: 1:100

LIST OF DESIGN CHANGES:

General
19 - Update sections to reflect changes (LP13 & LP14)

issue	date	description
D	26.03.25	Update for S4.55 Issue
C	20.11.23	Update to arch. S4.55 Issue
B	23.11.21	Update awnings. DA issue
A	02.11.21	Amend to comments. DA issue
01	01.11.21	Preliminary issue for review.

project
**Railway Road
Meadowbank NSW**

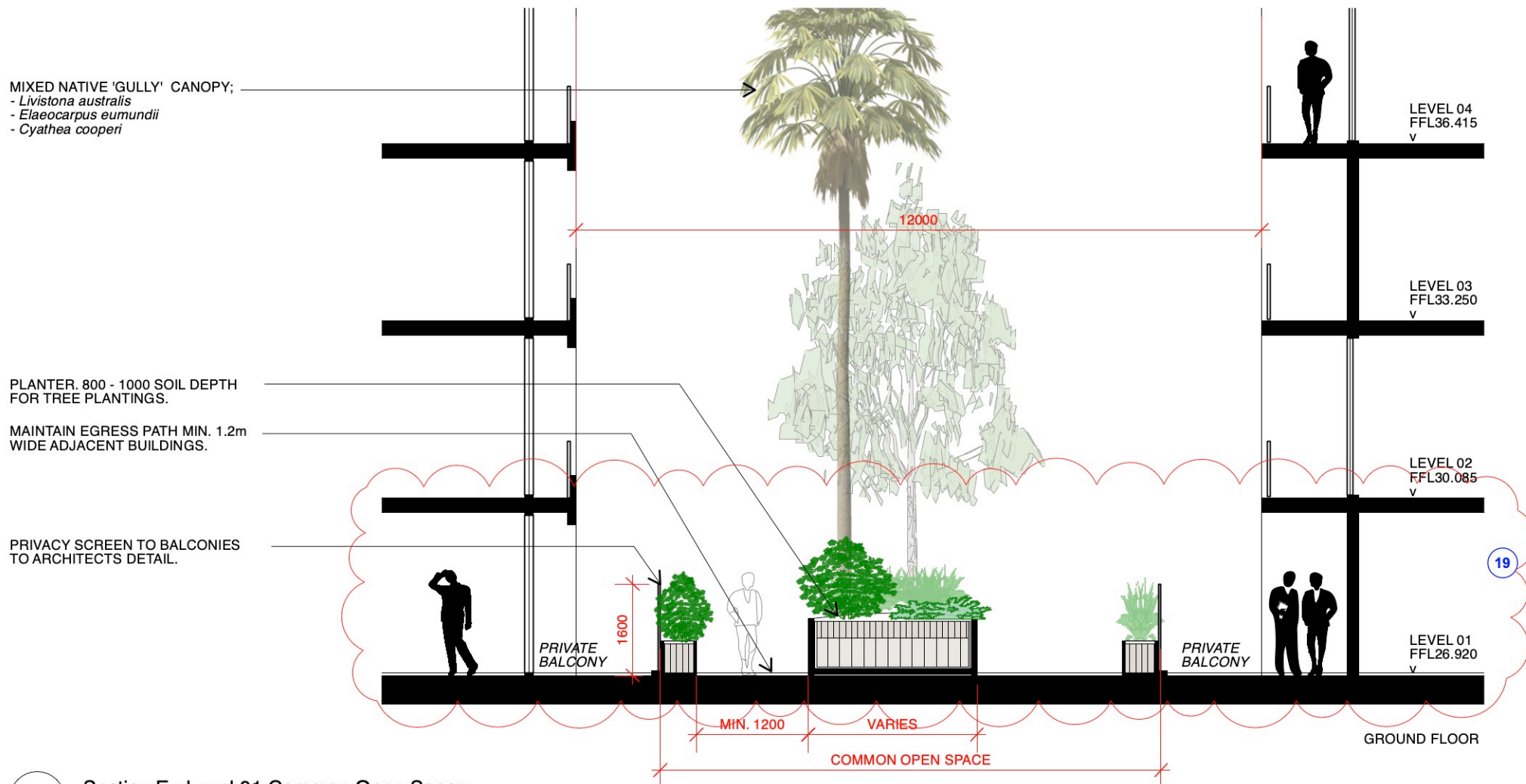
client
Apt. Residential Pty Ltd

drawing title
Landscape Sections 01

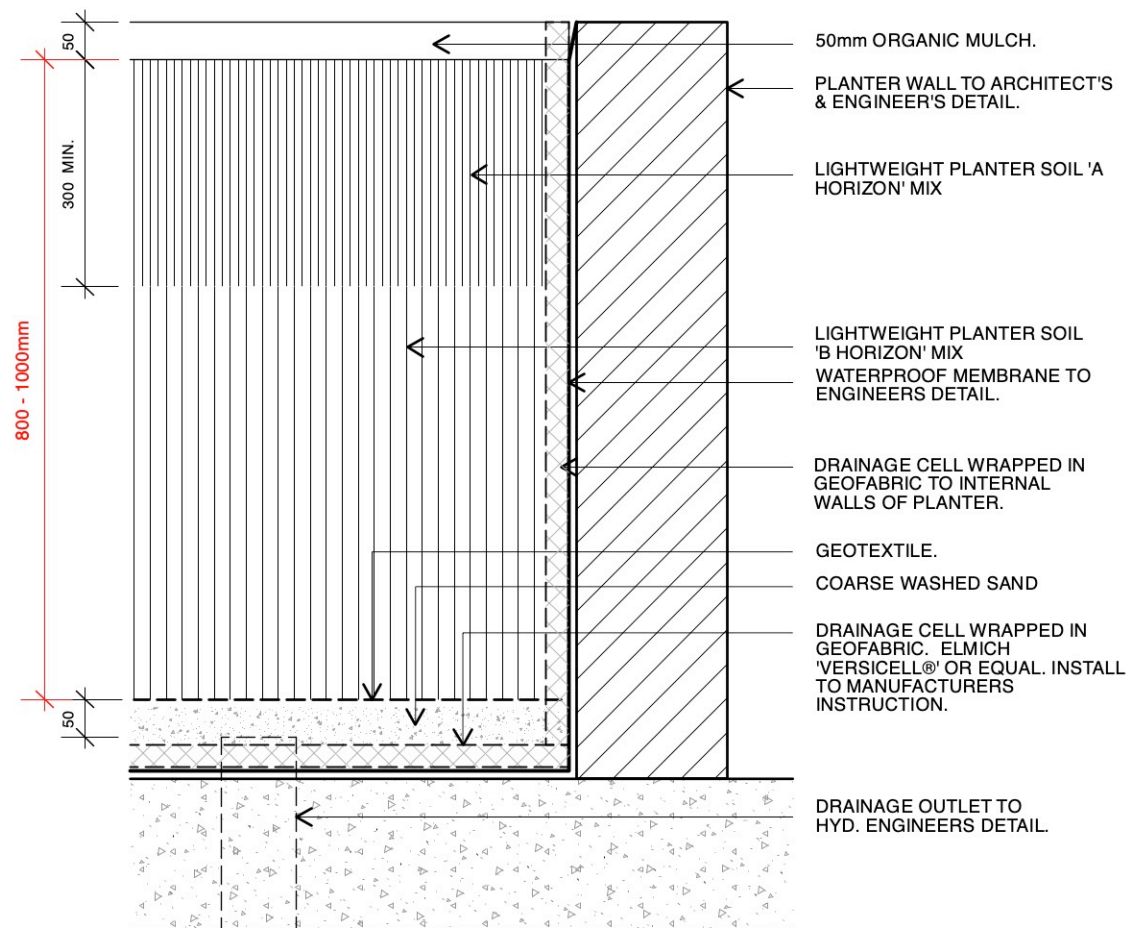
scale	project no.	drawing no.	issue
1:100 @ A3	19836	LP13	D

SECTION 4.55 APPLICATION

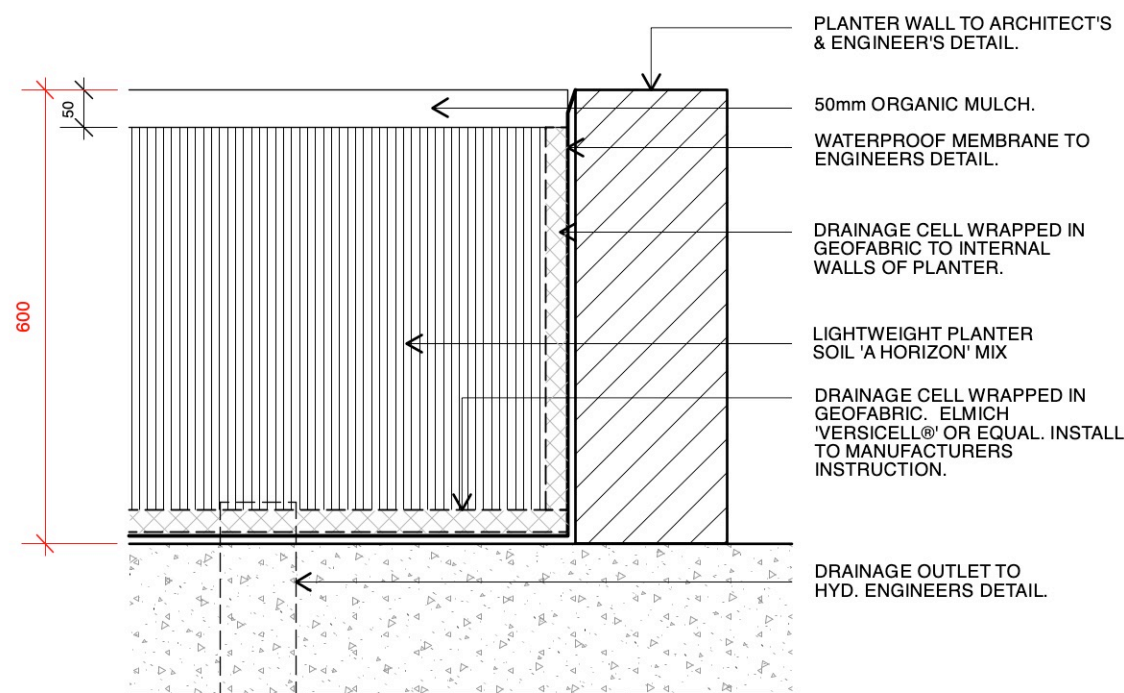
notes: This drawing has been prepared for consideration and reference in the communication of conceptual ideas and is not intended as a detailed 'For Construction' document. No guarantee is given to the accuracy in location or size of existing or proposed elements, measurements or nominated or figured dimensions. Do not scale drawing. Drawing and content protected by copyright.



05 Section E : Level 01 Common Open Space
Scale: 1:100



06 Detail : Planter on Slab 1m Deep (Typical)
Scale: 1:10



07 Detail : Planter on Slab 0.6m Deep (Typical)
Scale: 1:10

LIST OF DESIGN CHANGES:

General
19 - Update sections to reflect changes (LP13 & LP14)

issue	date	description
C	26.03.25	Update for S4.55 Issue
B	20.11.23	Update to arch. S4.55 Issue
A	02.11.21	Amend to comments. DA issue
01	01.11.21	Preliminary issue for review.

project
**Railway Road
Meadowbank NSW**

client
Apt. Residential Pty Ltd

drawing title
Landscape Sections 02

scale	project no.	drawing no.	issue
As Shown @ A3	19836	LP14	C

SECTION 4.55 APPLICATION

notes: This drawing has been prepared for consideration and reference in the communication of conceptual ideas and is not intended as a detailed 'For Construction' document. No guarantee is given to the accuracy in location or size of existing or proposed elements, measurements or nominated or figured dimensions. Do not scale drawing. Drawing and content protected by copyright.